

## Product Information

**Date:** July 8, 2011

**Product:** BabyWare PC software

**Subject:** New version release, V1.51

**Downloads:** To download BabyWare V1.51, [click here](#)\*  
\*requires login name and password to download

**New Features:** **MG6250 Wireless Console support**  
BabyWare now supports the MG6250 Magellan Wireless console.

### Magellan keypads support

BabyWare now supports the programming of the following three Magellan keypads:

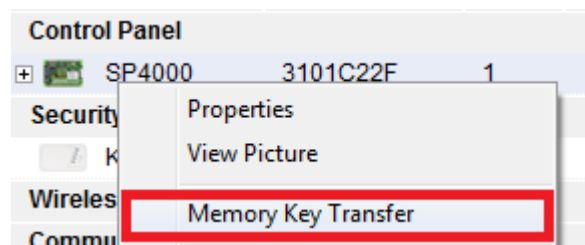
- K32LCD (32-Character Hardwired LCD Keypad Module)
- K37 (32-Zone Wireless Fixed LCD Keypad)
- K32RF (32-Zone Wireless LED Keypad Module)

### Improvements: Programming change indication

When a programming modification is done to a control panel through BabyWare, the modified option will be highlighted in red until the programming is transferred to the panel. With previous versions of BabyWare, whenever a programming modification was done to the panel, there was no indication of any modification done.

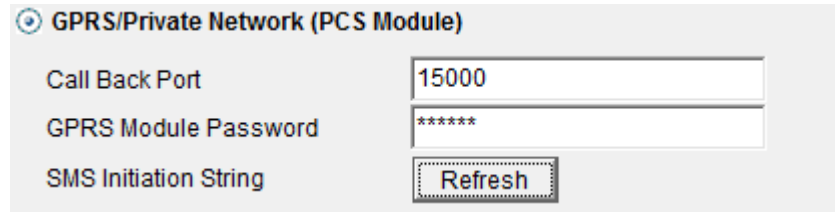
### PMC5 Memory Key support

It is now possible to transfer the panel programming from the software to a PMC5 memory key. The transfer can be performed by right-clicking on the panel and selecting the option "memory key transfer" from the list.



**Call back communication through GPRS support**

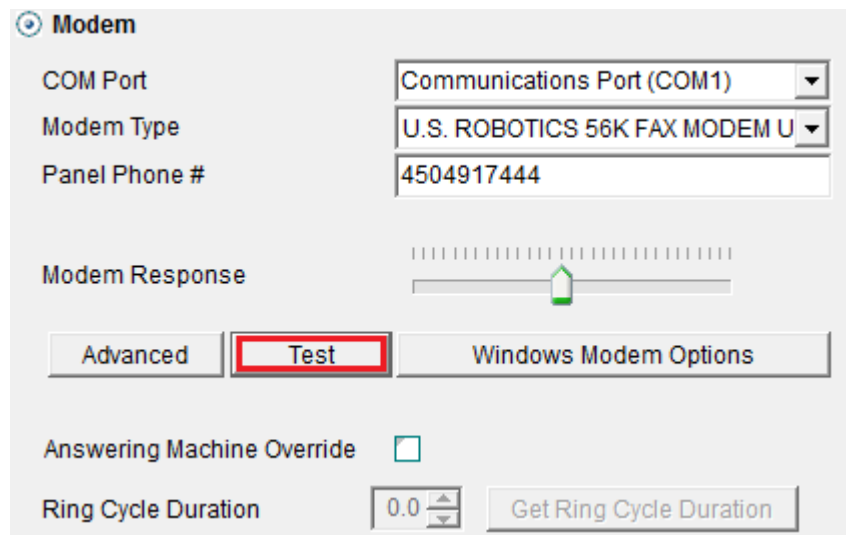
It is now possible to send an SMS to the PCS200 to initiate a GPRS call back to BabyWare to establish a communication link. This feature can be programmed into the 'connection option' setting for each account.



**GPRS/Private Network (PCS Module)**  
 Call Back Port: 15000  
 GPRS Module Password: \*\*\*\*\*  
 SMS Initiation String: Refresh

**Modem Test feature added**

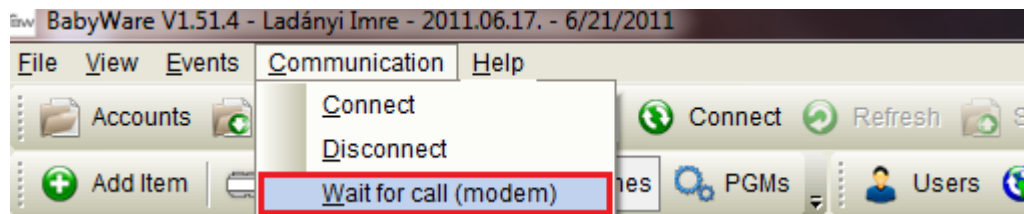
It is now possible to test a modem's communication strings in BabyWare using the modem test feature. This feature is located in the 'connection option' settings.



**Modem**  
 COM Port: Communications Port (COM1)  
 Modem Type: U.S. ROBOTICS 56K FAX MODEM U  
 Panel Phone #: 4504917444  
 Modem Response: [Slider]  
 Buttons: Advanced, **Test**, Windows Modem Options  
 Answering Machine Override:   
 Ring Cycle Duration: 0.0 [Get Ring Cycle Duration]

**'Wait for call' feature added**

It is now possible to have BabyWare "Wait for call" in order to establish communication with the control panel. This feature is used to have BabyWare automatically accept the incoming call from a modem. To activate this feature, select the Communication tab from the menu bar.

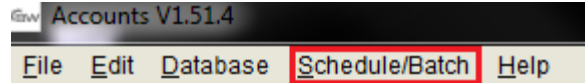


### Batch / Schedule mode feature added

The 'Schedule / Batch' mode will permit the control panel and BabyWare to communicate and perform specific predetermined actions such as:

1. Automatic event transfer
2. Automatic programming backup

This option can be programmed using the Schedule / Batch option that can be found on the main menu.



### Additional programming reports

BabyWare now supports the following printing reports;

- User programming
- Zone programming
- PGM programming
- Area Programming
- Reporting information
  - Global settings programming
  - GSM reporting activity
  - GPRS/IP reporting activity
  - SMS (Text message) reporting activity
  - Pager reporting activity
  - PC communication activity

### Additional software operator rights included

BabyWare now includes additional software operator rights. With the addition of these rights, operators will have more detailed rights according to what is required from them. Below are the additional operator rights that have been included:

- Account groups: Create, Modify, Delete
- Account Groups: Access
- Account: Create, Modify, Delete
- Receive / Send Programming
- Export / Import account
- Monitoring: Arm, Disarm, Zone Bypass, PGM, Events
- Print: Account info, programming, event list, logs, user codes
- View: Account info, programming, event list, logs
- View: Installer & Master codes

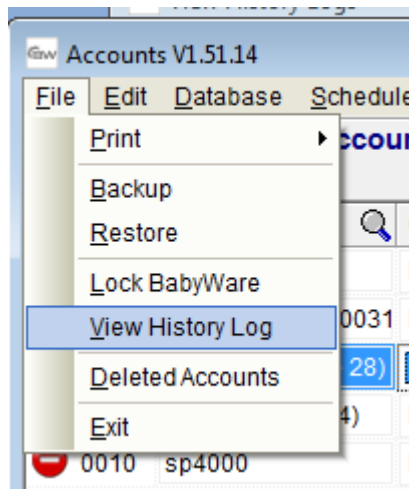
### Operator History Logs added

BabyWare now logs all the actions of each operator.

Below are a few examples of the type of actions that are logged;

- Log In/Off Software
- Modify Connection Settings
- Modify Account
- Connect IP / Disconnect
- Read programming from panel

The history log can be viewed by selecting the 'View History Log' option from the main menu.

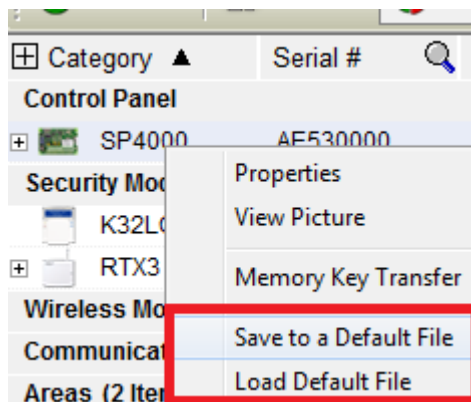


### Save / Load programming to a default file feature added

BabyWare can now save the programming of a control panel as a default file that can later be loaded to another, or multiple of the same control panels.

This feature becomes very useful for installers who use a personalized programming configuration for their installations.

In order to Save or load a default file, right-click on the control panel to view the available options.





**Resolved Communication loss during PC sleep mode**

**Issues:** When BabyWare is connected to a control panel and the PC goes into sleep mode, the control panel and BabyWare will now continue to communicate. With previous versions of BabyWare, once the PC would go into sleep mode, BabyWare would disconnect.

**Macro programming and transfer for IMPERIAL**

With previous versions of BabyWare, in rare occasions BabyWare would not assign macro identification numbers, therefore the Imperial system would not recognize it and would not work. This issue has now been resolved.

**Contact:** If you require any additional information or if you have any questions, please do not hesitate to contact our Support department.

Email: [support@paradox.com](mailto:support@paradox.com)

Fax: 450.491.2313

Phone: 1.800.791.1919 (N. America)

00.1.450.491.7444 (International)

Paradox Security Systems LTD – Product Information #BabyWare-11-0708